



Tunfield Road, Hoddesdon, EN11 9LQ |  
Offers in Excess of £399,995 | Freehold



Tunfield Road, Hoddesdon, EN11 9LQ

\*\*\* ATTRACTIVE SEMI-DETACHED HOUSE - POPULAR LOCATION - GARAGE & OFF STREET PARKING \*\*\* 3 bedroom semi-detached house in this convenient location for both junior and John Warner secondary schools. Walking distance of local shops and Rye House station.

### Key features

- Semi-detached House
- Garage & Parking
- Convenient location
- 3 Bedrooms
- Lounge/Dining Room
- Kitchen
- Cloakroom
- Garden

### Property Information

Tenure  
Freehold

Council Tax  
D

EPC Rating  
D

Local Authority  
Broxbourne Borough Council



 paulwallace  
estate agents

hoddesdon@paulwallace.co.uk

01992 466471

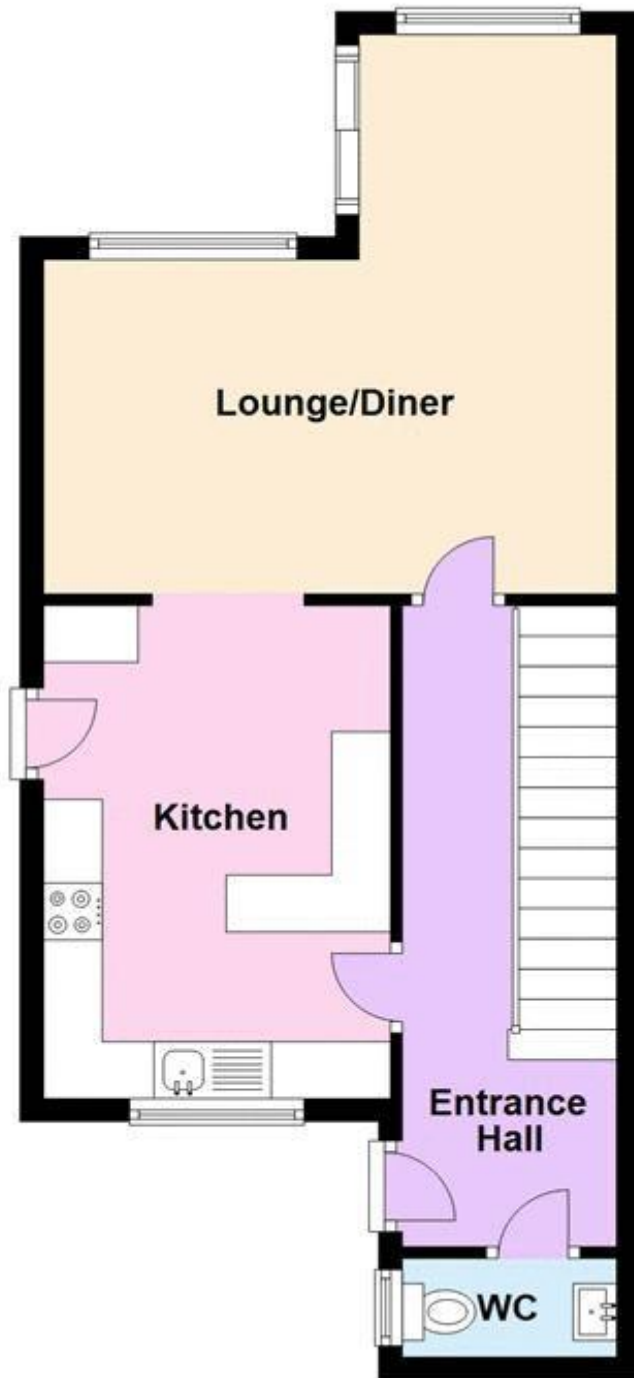




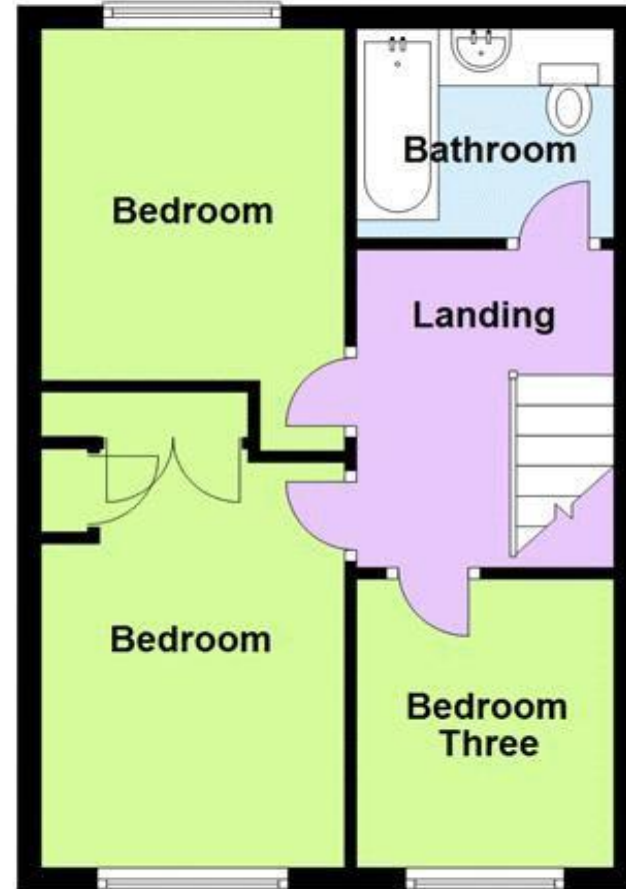




**Ground Floor**



**First Floor**















Registered Address: Unit 3 The Brookfield Centre, Cheshunt, Herts, EN8 0NN Company Registration Number: OC414280 | VAT Number: 276958046©2022 Paul Wallace Group LLP trading as Paul Wallace Estate Agents




### Paul Wallace Estate Agents

70 High Street  
Hoddesdon  
Hertfordshire  
EN11 8ET

 01992 466471

 [hoddesdon@paulwallace.co.uk](mailto:hoddesdon@paulwallace.co.uk)

 [www.paulwallace.co.uk](http://www.paulwallace.co.uk)



### Opening Times

Mon	9am to 6.30pm
Tues	9am to 6.30pm
Wed	9am to 6.30pm
Thurs	9am to 6.30pm
Fri	9am to 6.30pm
Sat	9am to 5.00pm
Sun	Closed



Agents Note: Whilst every care has been taken to prepare these sales particulars, they are for guidance purposes only. All measurements are approximate and are for general guidance purposes only and whilst every care has been taken to ensure their accuracy, they should not be relied upon. Potential buyers are advised to recheck the measurements.